

# Optimisation del ancho de banda (Lab Setup)



Christian Benvenuti

christian.benvenuti@libero.it

La Paz, Bolivia, 11-15/5/2009



# Commercial Hardware/Software versus Open Source Software

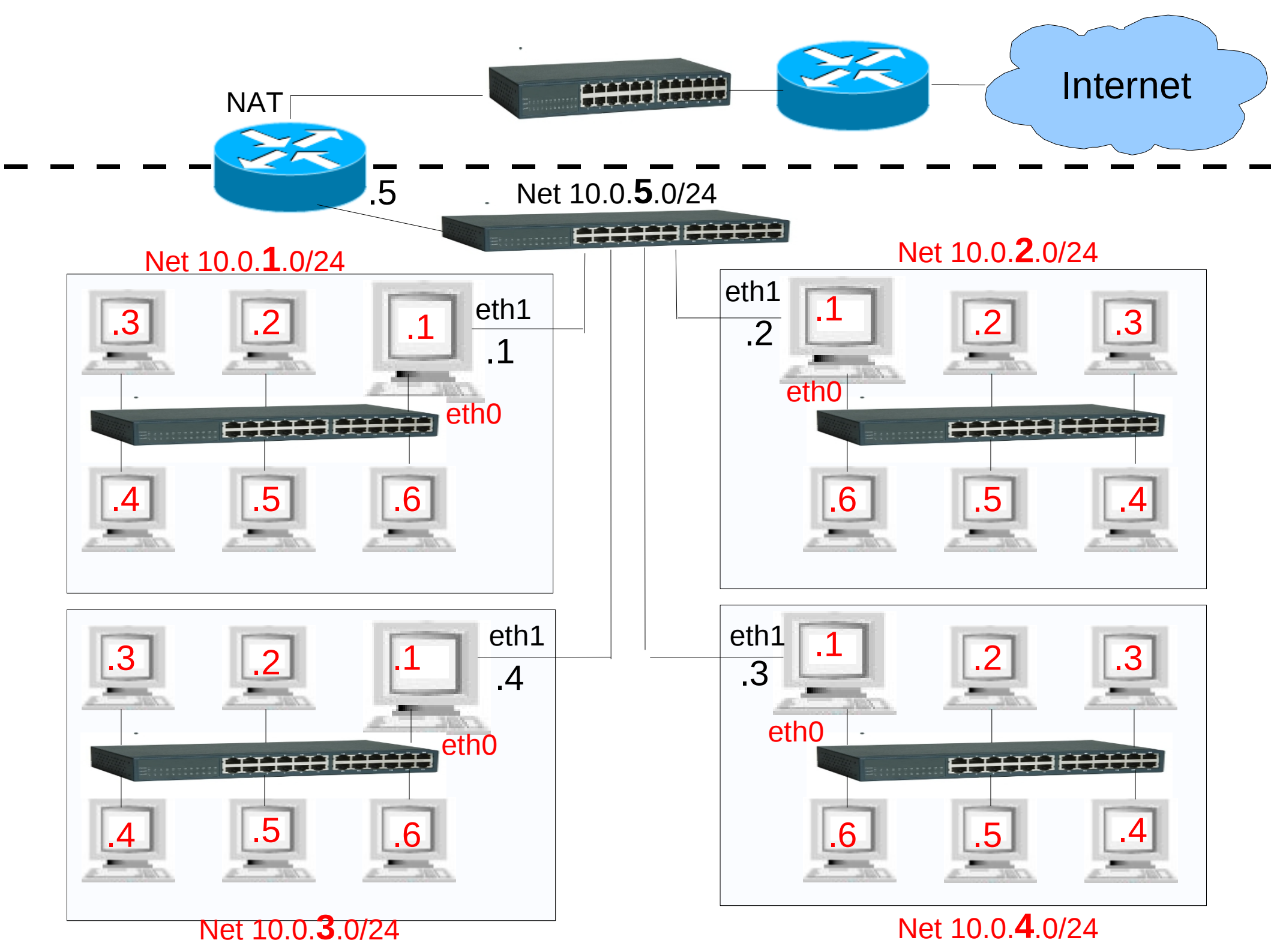
- If you are not using Open Source SW, what are the main reasons?
  - 
  - 
  -
- What Commercial HW/SW are you using mainly?
  - 
  - 
  -
  - Why did you choose these brands

The all course is based on Open Source software ... therefore let's start with a lab setup to test our Linux/net skills ...

# Today

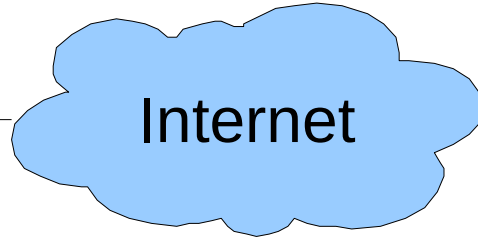
- Test
- Linux re-installation
  - New Partition Table
  - Kernel Upgrade (usually needed only on the servers)
- Lab setup
- A bit of troubleshooting

This is the current LAB setup  
(from last week)



And this is the one we are going to  
configure today

eth0  
NAT



eth1  
.254

Net 192.168.0.0/24



Net 192.168.1.0/24



eth0

eth1  
.1

Net 192.168.2.0/24



eth0

eth1  
.2



.3

Net 192.168.3.0/24

.4

Net 192.68.4.0/24

.5

Net 192.168.5.0/24

.6

Net 192.168.6.0/24

- Please:
  - NO Network Manager
  - NO DHCP
  - Find out what files the system uses to store the configuration (remember what we said about the *rcX/* directories) and make sure the config won't be lost after a reboot
    - but make sure you know how to config the net with the command line too
  - All groups have to cooperate to test the lab setup.
  - All group members should work and understand the various configurations/steps.
    - I may call a random group/member and ask to describe the configuration, as well as what problems were found and how they got resolved.

# Before we start ...

- Does anyone know how to configure a Linux router?
  - Plugging in a new Network Interface Card
  - Configuring Routing and/or Bridging
  - Etc
- Do we all know what ***ping*** and ***traceroute*** are and are used for?
- How about ***ifconfig***, ***route***, ***ip***, ***iptables***, ***tc***, ***netstat***, ***tcpdump***, ...?
- The role of ***/etc/resolv.conf***?

# How can I test if everything has been correctly configured?

- 
- 
- 
- 
- 
- 
- 
-

And now let's test our  
troubleshooting skills ...

# Copyright



- This presentation is released under the Creative Commons License:
  - Attribution, Noncommercial, Share Alike 2.5
  - (<http://creativecommons.org/licenses/by-nc-sa/2.5/>)
- Attribution
  - You must attribute the work in the manner specified by the author or licensor.
- Noncommercial.
  - You may not use this work for commercial purposes.
- Share Alike.
  - If you alter, transform, or build upon this work, you may distribute the resulting work only under a license identical to this one.